

## B-Raf

**Catalog Number:** 26129

**Gene Symbol:** B-Raf

**Description:** Anti-B-Raf Mouse Monoclonal Antibody

**Background:** B-Raf belongs to the TKL Ser/Thr protein kinase family, RAF subfamily. It is involved in the transduction of mitogenic signals from the cell membrane to the nucleus, and may play a role in the postsynaptic responses of hippocampal neuron. B-Raf is located to nucleus and cytoplasm, and expressed in brain and testis.

**Immunogen:** A synthetic peptide from the internal region of B-Raf, human origin.

**Tested applications:** ELISA, WB, IHC

**Recommended dilutions:**

ELISA: 1:1000-1:5000

WB: 1:100-1:1000

IHC: 1:50-1:100

**Concentration:** 1 mg/ml

**Host:** Mouse

**Clonality:** Monoclonal

**Purity:** Purified from serum

**Format:** Liquid

**Storage buffer:**

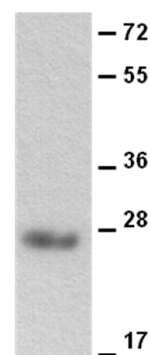
Preservative: no

Constituents: PBS (without  $Mg^{2+}$  and  $Ca^{2+}$ ), pH 7.4, 150 mM NaCl, 50% glycerol

**Species Reactivity:** Anti-B-Raf antibody recognizes B-Raf of vertebrates.

**Storage Conditions:** Store at -20 °C. Avoid freeze / thaw cycles

### Western blot:



WB: anti-B-Raf mAb

Western blot analysis of recombinant B-Raf protein. Purified His-tagged B-Raf protein (Cat. #10161) was blotted with anti-B-Raf monoclonal antibody (Cat. #26129).